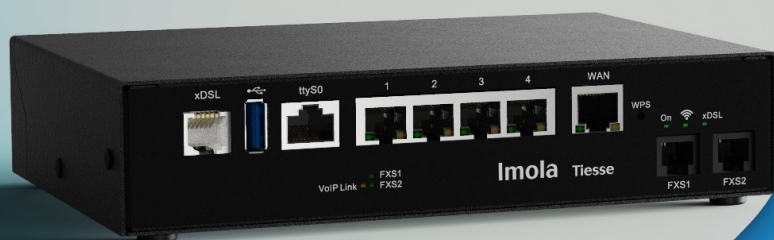


Imola LX 0272-20

Voip IAD - eVDSL Router



Datasheet

Imola LX 0272-20

VoIP IAD - eVDSL Router



Imola LX 0272-20 is part of the IMOLA products series, which are certified and used by the main telecommunication operators in their networks.

These model are a highly innovative series of routers/IADs for ultra-broadband data and voice networks.

Imola LX 0272-20 routers allow you to make up to 2 telephone calls (fax and voice) simultaneously over IP network, they are equipped with 4 Giga Ethernet ports and 1 xDSL port that supports the enhanced VDSL profile (35b vPlus).

Imola LX 0272-20 offers advanced features of Quality of Service (QoS), security and routing.

| FEATURES | KEY BENEFITS | APPLICATIONS |
|-------------|---|--|
| ⇒ Routing | ⇒ Security | ⇒ Voice and data services for small and medium enterprises |
| ⇒ Switching | ⇒ Easy installation and factory pre-configuration | ⇒ Branches and remote offices of banks and insurance companies |
| ⇒ QoS | ⇒ Remote management and provisioning | ⇒ Retail |
| ⇒ VoIP | ⇒ Zero Touch Provisioning | |

EVDSL - NEW GENERATION NETWORK

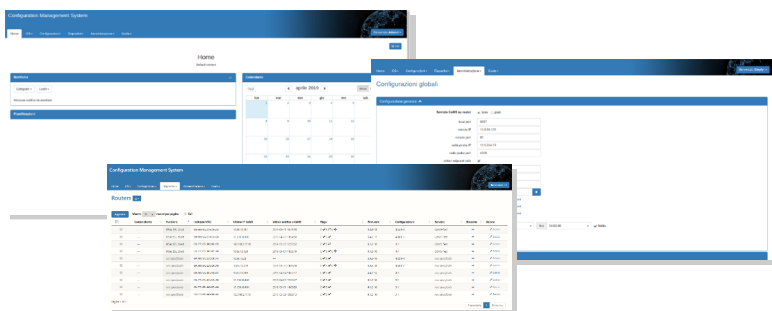
Support of the new generation networks (NGN) and ensuring:

- Support for VDSL2 profiles: from 8 MHz up to 35 MHz, in accordance with ITU-T G993.2 Annex Q standard (35b profiles or Vplus) capable of aggregating rates up to 400 Mbps
- G.Vector standard-compliant (ITU-T G.993.5)
- ITU-T G.998.4G.INP standard-compliant (impulse noise protection)
- ADSL2 compatible (backward compatibility)

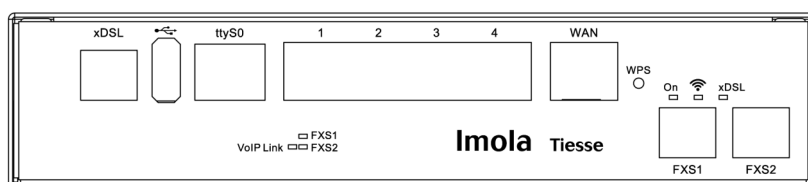


ZERO TOUCH PROVISIONING

IMOLA 0272-20 routers are integrated in the TNA (Tiesse Network Architecture) suite, which is used for the remote and automated management via WEB of the configurations and firmware releases of the installed device park.



INTERFACES – Hardware features



| | | | |
|---------|---------------|---|--|
| LAN | GE ports | 4 | 10/100/1000 Mbps Ethernet ports switch, RJ45 auto sensing connectors |
| | GE-WAN ports | 1 | Ethernet WAN port (label WAN) |
| | ADSL 2/2 + | 1 | 1 port with RJ11 connector, Full rate ADSL2/2+ / VDSL2 ADSL2/2+ – Downstream data rate up to 24 Mbps / Upstream data rate up to 3.5 Mbps – Compliant to standards G.992.1 annex A, B, C & I, G.992.2-g.Lite, G.992.3 annex A, B, I, J, M, G.992.4-g.Lite.bis, G.992.5 annex A, B, C, I, J, M, ANSI T1.413 issue2, ETSI TS 388 ADSL-over-ISDN, ITU T-I361, ITU T-I363.5, ITU T-I432, ITU T-I610, ITU T-I731 |
| | VDSL2 | | VDSL2 – Support of all VDSL2 profiles: from 8 MHz to 30 MHz ITU-T G.993.2 – Compliant to G.Vector standard (ITU-T G.993.5) – Compliant to ITU-T G.998.4 G.INP standard – Compatible with ADSL2 (backward compatibility) |
| WAN | eVDSL | | eVDSL2 Support of the profile 35 MHz ITU-T G.993.2 Annex Q (profil 35b o Vplus) with aggregated rates up to 400 Mbps |
| VOICE | FXS ports | 2 | RJ11 connector |
| CONSOLE | Console ports | 1 | RJ45 connector |
| USB | USB ports | 1 | USB 3.0 port |

SOFTWARE features

Note: the list below is purely indicative; the features depend on the NoS version and update.

| | | | |
|--------------------------------|--|-------------------------------------|--|
| NETWORKING | <ul style="list-style-type: none"> – TCP-UDP, IPv4 – ICMP – IPv6 | SERVICES | <ul style="list-style-type: none"> – DHCP client, DHCP server with antispoofing functions – Intelligent DNS Proxy, local and remote – Traceroute – NTP Client and Server support – Easy VPN |
| LAYER 2 features | <ul style="list-style-type: none"> – LAN Bridging – VLAN support on LAN interface 802.1q in Access mode, Trunk, native VLAN and Hybrid mode – Layer 2 Tunnelling Protocol (L2TP) – 802.1Q-in-802-1Q | MANAGEMENT and CONFIGURATION | <ul style="list-style-type: none"> – SNMP v1, SNMPv2, SNMPv3 – Telnet server with multiple simultaneous sessions – SSH server with multiple simultaneous sessions (SSHv2) – IP SLA support for: One Way Delay, Round Trip Delay, Jitter, Packet Loss – SAA (Service Assurance Agent) – Fault management Syslog /Trap – User authentication with PAP/CHAP, RADIUS, TACACS+ – Wi-Fi with WPA2, Multiple SSID – Tracking for backup management, commands and scheduled events – Software update via TFTP and FTP – Configuration via command Line Interface (CLI), Text/Menu oriented and Telnet – TNA (Tiesse Network Architecture) suite for auto-provisioning and remote automated management – Management of an arbitrary number of configurations |
| ROUTING & MULTICAST | <ul style="list-style-type: none"> – Static, Policy routing, RIPv1, RIPv2 – BGP-4, BGP-4+ – OSPFv2 – VRF Lite, Routing redistribution and tagging – VRRP (Virtual Routing Redundancy Protocol) with IPv4-IPv6 authentication – IGMP v1-v2-v3, IGMP snooping, IGMP proxying – Multicast routing with PIMv2 sparse-mode and PIMv2 dense-mode, MSDP – IEEE 802.1d (Spanning Tree Protocol) | VOICE | <ul style="list-style-type: none"> – Compliant to the SIP standards: RFC 2327 SDP, RFC 2617, RFC 3261 SIP, RFC 2833, RFC 2976, RFC 3262, RFC 3264, RFC 3265, RFC 3311, RFC 3323, RFC 3325, RFC 3326, RFC 3398, RFC 3578, RFC 3842, RFC 3960, RFC 4566 – Registration features SIP, SIP UAC, registration deletion – Codec support and negotiation – OOB DTMF tone management, in-band and announcing tone – Unconditional call forwarding – On Hold Call Capability – Fax T.38 Support – Interoperability with PBX – Line Hunting |
| QoS | <ul style="list-style-type: none"> – Traffic classification based on source IP, on a combination of source IP, destination IP, protocol (UDP, ICMP, TCP, etc) ports, application recognition, IP Precedence and DSCP – DiffServ – Layer 2 Remarking COS – QoS on ATM class – Shaping with guaranteed allocated bandwidth and redistribution of bandwidth excess – Committed Access Rate e Multicast rate Limit – Mechanisms of traffic prioritization, ability to define an arbitrary number of priority classes – Link aggregation IEEE 802.3ad | | |
| SECURITY | <ul style="list-style-type: none"> – NAT/PAT – ACLs, Stateful Firewall – IP Filtering – SSL Tunnelling – L2TP – PPTP – GRE Tunnelling – VPN with IPSEC, 3 DES Encryption | | |

HARDWARE FEATURES

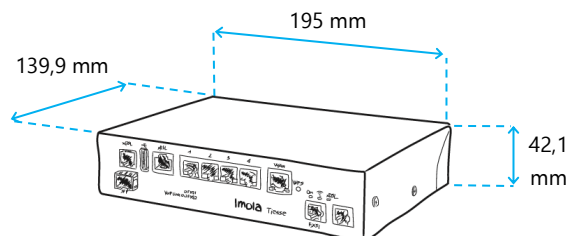
| | | | |
|--------------------|---|---------------------|------------------------|
| POWER | 12V AC/DC Adapter Power Switch ON/OFF | PROCESSOR | RISC Network processor |
| CONSUMPTION | < = 12W | MEMORY | 256 MB - DDR3 |
| ENVIRONMENT | Operating temperature: -5° C / +50° C Storage temperature: -40° C / +70° C Max operating humidity: 93% (non condensing) | FLASH MEMORY | 256 MB |



LED INDICATORS

- 1 x power / operational status
- 1 x radio signal activity
- 1 x xDSL connection status
- 2 x analogic voice port status
- 1 x VoIP connection status
- 2 x each Ethernet port for operational status

SIZE



STANDARD WEIGHT

1010 gr ± 10%



Tiesse is a 100% Italian company which has more than 20 years of expertise in designing, developing, and manufacturing M2M/IoT and network devices. The products series IMOLA, LIPARI and LEVANTO, which are innovative, competitive and certified, are present in the largest distributed national networks (from gas stations to large retailers, insurance companies and banks) as well as in the largest networks of the main gaming operators and energy sector.

www.tiesse.com

Info: mail@tiesse.com

Marketing & Sales: marketing@tiesse.com



Ivrea – Headquarter - Sales offices, Manufacturing facility and R&D: Via Asti 4, 10015 Ivrea (TO) - Tel +39.0125230544 - Fax +39.0125631923

Rome – Sales offices and R&D: Viale L. Gaurico 9/11, 00143 Roma EUR - Tel +39.0654832203 - Fax +39.0654834000

Turin - R&D: Via Livorno 60, 10144 Torino (TO) | **Avezzano** - R&D: Via C. Corradini 80, 67051 Avezzano (AQ)

© Copyright Tiesse S.p.A. - All rights reserved.

Any disclosure, derivation or reproduction of this document, even partial, is strictly prohibited without prior written authorization by Tiesse S.p.A.

Disclaimer – The informations in this document may contain predictive statements including, without limitation, statements regarding the future financial and operating results, future product portfolio, new technology, etc. There are a number of factors that could cause actual results and developments to differ materially from those expressed or implied in the predictive statements. Therefore, such information is provided for reference purpose only and constitutes neither an offer nor an acceptance. Tiesse may change the informations at any time without notice.