

# Imola LX 0272-IKW-V

Ultra Broadband VDSL2 router



Datasheet

# Imola LX

## 0272-IKW-V

### Ultra broadband VDSL2 router



The **Imola LX 0272-IKW-V** series routers are part of the evolution of the IMOLA line, which are certified routers used in the networks of the main telecommunications operators. Thanks to the ADSL2 / VDSL2 and WAN Giga Ethernet connectivity, they are particularly suitable for business applications where security, service continuity and network performance are of primary importance.

#### FEATURES

The **Imola LX 0272-IKW-V** model include the following functionalities:

- **Routing**
- **Switching**
- **Multi fail-over**
- **QoS**
- **VoIP**

For the VDSL2 generation networks.

#### KEY BENEFITS

- ⇒ Security
- ⇒ Scalability
- ⇒ Easy installation and factory pre-configuration
- ⇒ Zero touch provisioning

#### APPLICATIONS

**Imola LX 0272-IKW-V** model is particularly suited for business applications:

- Enterprise WAN network secure access
- Branches and remote offices of Banks and Insurance companies
- Lottery
- Gaming networks
- Transport
- Backup for broadband networks

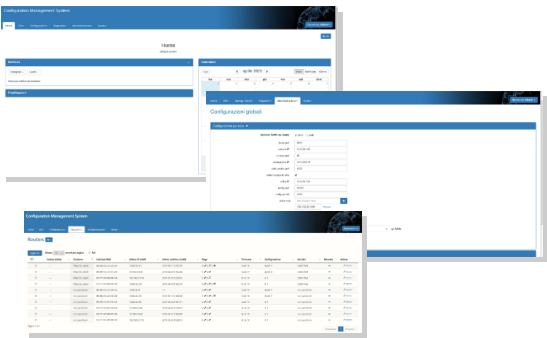
### VDSL2 - NEW GENERATION NETWORK

**Imola LX 0272-IKW-V** supports the new generation networks (NGN) and ensures:

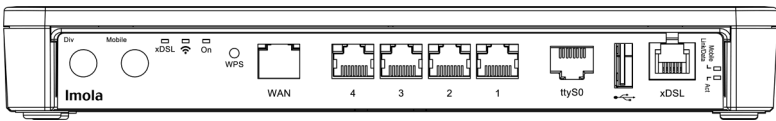
- Support for VDSL2 profiles: 8 MHz to 30 MHz ITU-T G993.2
- G.Vector standard conformity (ITU-T G.993.5)
- ITU-T G.998.4 G.INP standard conformity (impulse noise protection)
- ADSL2 compatible (backward compatibility)

Zero Touch Provisioning

IMOLA LX 0272-IKW-V router is integrated in the **TNA (Tiesse Network Architecture)** suite, which is used for the remote and automated management via WEB of the configurations and firmware releases of the installed device park.



INTERFACES



LAN	GE	4	10/100/1000 Mbps ports, RJ45 connector
	Wi-Fi	1	802.11 b/g/n port (2.4 GHz) 2x2
WAN	GE-WAN	1	10/100/1000 Mbps RJ45 port, RJ-45 connector (label WAN)
	ADSL 2/2+ VDSL2	1	<div>RJ11 port, Full rate ADSL2/2+ / VDSL2</div> <div><b>ADSL2/2+</b> Downstream data rate up to 24 Mbps — Upstream data rate up to 3.5 Mbp Standards-compliant G.992.1 annex A,B,C&amp;I, G.992.2-g.Lite, G.992.3 annex A, B, I, J, M, G.992.4-g.Lite.bis, G.992.5 annex A, B, C, I, J, M, ANSI T1.413 issue2, ETSI TS 388 ADSL-over-ISDN, ITU T-I361, ITU T-I.363.5, ITU T-I.432, ITU T-I610, ITU T-I731</div> <div><b>VDSL2</b> Support for all VDSL2 profiles: 8 MHz to 30 MHz ITU-T G993.2 G.Vector standard-compliant (ITU-T G.993.5) ITU-T G.998.4 G.INP standard-compliant ADSL2 compatible (backward compatibility)</div>
CONSOLE	Porta console	1	RJ45 connector
USB	Porta USB	1	USB 3.0 port



## SOFTWARE

### NETWORKING

- TCP-UDP IPv4
- IPv6

### LAYER 2 features

- LAN Bridging
- VLAN support on LAN interface 802.1q in Access mode, Trunk, native VLAN and Hybrid mode
- Layer 2 Protocol Tunneling (L2PT)
- 802.1Q-in-802.1Q

### ROUTING & MULTICAST

- Static, Policy routing, RIPv1, RIPv2
- BGP-4, BGP-4+
- OSPFv2
- VRF Lite, Routing redistribution e tagging
- VRRP (Virtual Routing Redundancy Protocol) with IPv4-IPv6 authentication
- IGMP v1-v2-v3, IGMP snooping, IGMP proxying
- Multicast routing with PIMv2 sparse-mode and PIMv2 dense-mode, MSDP
- IEEE 802.1d (Spanning Tree Protocol)

### QoS

- Traffic classification based upon source IP, based on a combination of source IP, destination IP, protocol (UDP, ICMP, TCP, etc), upon DSCP/IP precedence, ToS or Port
- DiffServ
- CoS on VLAN
- QoS on ATM classes
- Shaping with guaranteed allocated bandwidth and redistribution of bandwidth excess
- Committed Access Rate e Multicast rate Limit
- Mechanisms of traffic prioritization, ability to define an arbitrary number of priority classes
- Link aggregation IEEE 802.3ad

### SECURITY

- NAT/PAT
- ACLs, Stateful Firewall
- SSL Tunneling
- L2TP
- GRE Tunneling with keep alive and key sequence numbering (radio mobile network optimization)
- VPN con IPSEC/ESP o IPSEC/AH IKEv1/IKEv2
- 3 DES Encryption

### SERVICES

- DHCP client, DHCP server with anti spoofing functions, DHCP Layer Discovery Protocol IEEE 802.1ab
- Intelligent DNS Proxy, both local and remote
- Traceroute
- NTP Client and Server support
- Easy VPN
- DDns (Flex IP)

### MANAGEMENT and CONFIGURATION

- SNMP v1, SNMPv2, SNMPv3
- Telnet server with multiple simultaneous sessions
- SSH server with multiple simultaneous sessions (SSHv2)
- IP SLA support for: One Way Delay, Round Trip Delay, Jitter, Packet Loss
- SAA (Service Assurance Agent)
- Fault management Syslog /Trap
- Radius Support, TACACS+
- Tracking for backup management, commands and events scheduled
- Software update via TFTP and FTP
- Configuration via command Line Interface (CLI), Text/Menu oriented and Telnet
- TNA (Tiesse Network Architecture) suite per auto-provisioning e gestione automatizzata remota
- Possibility to keep an arbitrary number of configuration

## ONE ROUTER, THREE POSITIONING OPTIONS



On a horizontal surface, such as your desktop, for example



Vertical positioning, using its bracket



Wall mounting, using the same bracket of the vertical positioning

## SYSTEM FEATURES

## POWER

12 V AC/DC Adapter  
Power Switch ON/OFF

## CONSUMPTION

< = 12W (Full configuration)

## ENVIRONMENT

## Operating temperature:

-5° C / +50° C

## Storage temperature:

-40° C / +70° C

## Max operating humidity:

93% (non condensing)

## PROCESSOR

RISC Network processor

## MEMORY

256 MB - DDR3

## FLASH MEMORY

256 MB

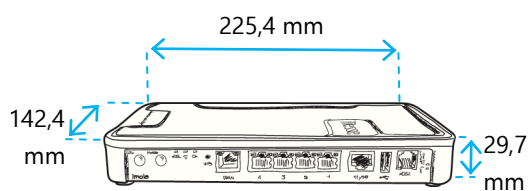
## LED INDICATORS

- 1 x power / operational status
- 1 x radio signal activity
- 1 x xDSL connection status
- 2 x each Ethernet port for operational status

## SIZE

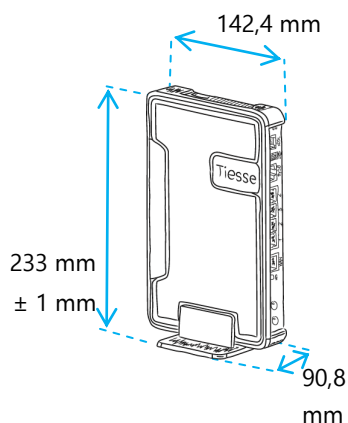
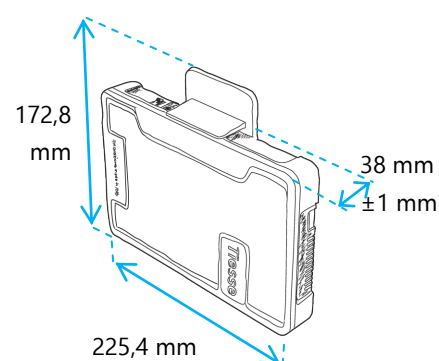
## Horizontal positioning

On horizontal surface, without bracket.



## STANDARD WEIGHT

520 gr  $\pm 10\%$

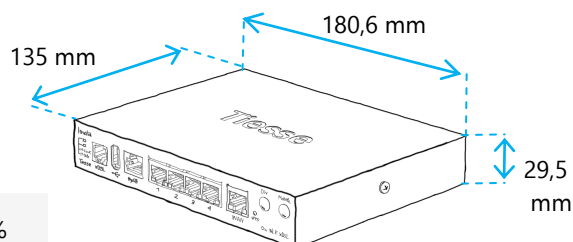
Desktop vertical mounting  
with bracketWall mounting  
with bracket

## METALLIC CHASSIS VARIANT

Metal chassis variant available (for mass production or industrial projects) with extended operating temperature range (-25°/+70°).

## STANDARD WEIGHT

660 gr  $\pm 10\%$



**Tiesse** is a 100% Italian company which has more than 20 years of expertise in designing, developing, and manufacturing M2M/IoT and network devices. The products series IMOLA, LIPARI and LEVANTO, which are innovative, competitive and certified, are present in the largest distributed national networks (from gas stations to large retailers, insurance companies and banks) as well as in the largest networks of the main gaming operators and energy sector.

**www.tiesse.com**

**Info:** mail@tiesse.com

**Marketing & Sales:** marketing@tiesse.com



**Ivrea** – Headquarter - Sales offices, Manufacturing facility and R&D: Via Asti 4, 10015 Ivrea (TO) - Tel +39.0125230544 - Fax +39.0125631923

**Rome** – Sales offices and R&D: Viale L. Gaurico 9/11, 00143 Roma EUR - Tel +39.0654832203 - Fax +39.0654834000

**Turin** - R&D: Via Livorno 60, 10144 Torino (TO) | **Avezzano** - R&D: Via C. Corradini 80, 67051 Avezzano (AQ)

© Copyright Tiesse S.p.A. - All rights reserved.

Any disclosure, derivation or reproduction of this document, even partial, is strictly prohibited without prior written authorization by Tiesse S.p.A.

**Disclaimer** – The informations in this document may contain predictive statements including, without limitation, statements regarding the future financial and operating results, future product portfolio, new technology, etc. There are a number of factors that could cause actual results and developments to differ materially from those expressed or implied in the predictive statements. Therefore, such information is provided for reference purpose only and constitutes neither an offer nor an acceptance. Tiesse may change the informations at any time without notice.