



Elba 100



Elba 100



Managed switch

ELBA SERIES

The Elba series models are managed, fixed-configuration Ethernet switches and are part of the line of networking solutions designed and manufactured by Tiesse.

SUGGESTED SCENARIOS AND APPLICATIONS

Elba 100 is particularly suitable for business scenarios where

- Security
- Network

performance is paramount.

KEY FEATURES



Secure by design

Right from the design phase for robust and natively secure solutions.



Fast connections

Fast connections with multi-fibre up to 10Gb



Zero Touch Provisioning

Zero Touch Provisioning facilitates remote management and agile configuration of the installed base.



Smart value

Maximum value for your business thanks to excellent performance/price ratio.



Factory pre-configurations

Receive your product pre-configured according to your specific case.



100% factory-tested

We test all our equipment, including SIM cards for models with a cellular radio connection.

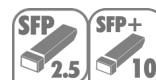
ELBA 100

10 ports, easy to configure

The Elba models are easy to configure, reducing set-up time within the network.



8 LAN Gigabit Ethernet ports



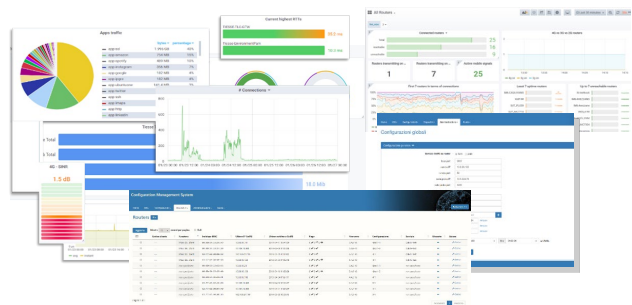
2 fiber ports up to 10 Gb



Zero Touch Provisioning



ZERO TOUCH PROVISIONING



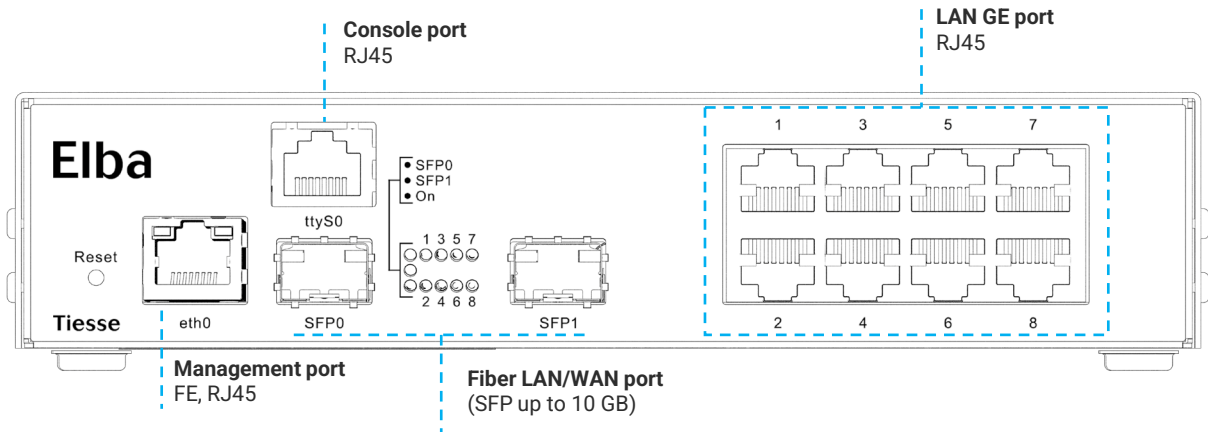
Tiesse’s router are integrated in the **TNA (Tiesse Network Architecture)** suite.

TNA is the modular software suite that enables Zero Touch Provisioning network architecture, including monitoring, remote and automated web-based management of configurations and firmware releases of the installed fleet; it enables traffic engineering, network overlays, and many other functionalities.

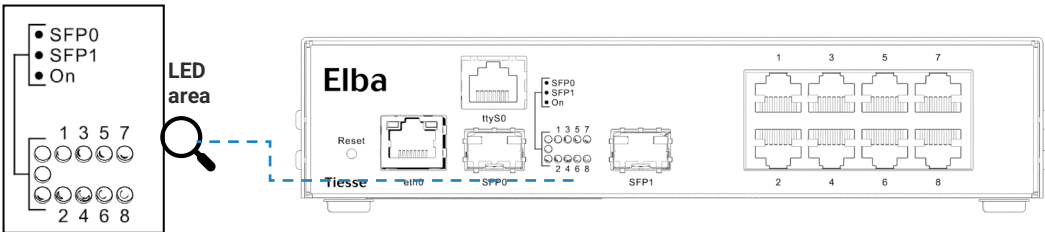
A complete datasheet of the solution is available at www.tiesse.com.

HARDWARE INTERFACES

Port	N°	Type	Details
LAN	1	FE	10/100 Mbps – mostly used for management purposes
	8	GE	10/100/1000 Mbps – Ethernet cable RJ45 U/UTP cat. 5e or higher required
LAN/WAN	2	Fibra	SFP ports for WAN access with fibre optic cable . SFP transceiver modules not included



LED DESCRIPTION



LED	Color	Position	Description
Power	Green	LED area	Indicates power supply operating status
LAN	Yellow/Green	LED area	One for each ETH port (1-8), indicating operational status 1Gb connection (yellow)
Fiber	VerGreende	LED area	One for each SFP port, indicating fibre connection operational status

SOFTWARE

Note: the following list is purely indicative, active features depend on version and software update (NOS).

Switching Layer 2

- Spanning tree protocol
- Support of Spanning Tree Protocol 802.1d standard
- RSTP (Rapid Spanning Tree Protocol), MSTP Multiple Spanning Tree Protocol
- LLDP - Support of Link Layer Discovery Protocol IEEE 802.1ab
- VLAN
- VLAN tag 802.1Q, VLAN based on MAC address
- VLAN for management, VLAN Q-in-Q
- VLAN for voice traffic (assignment to a specific VLAN with QoS management)
- Port aggregation - Support of LACP (Link Aggregation Control Protocol) IEEE 802.3ad
- Unidirectional Link Detection - Support of UDLD
- IGMP - Support of Internet Group Management Protocol to limit multicast traffic

QoS

- Class of Service (CoS)
- Classification based on port, over VLAN priority VLAN (802.1p tag),
- Differentiated Services (DiffServ)
- Remarking COS
- WRR - Support Weighted Round Robin
- Levels - 8 hardware queues for each priority level
- Traffic/speed
- Data flow control and restriction based on VLAN and port
- Storm control

MANAGEMENT AND CONFIGURATION

- Configurazione mediante command Line Interface (CLI)
- Configurazione via interfaccia web su HTTP
- TNA (Tiesse Network Architecture) suite per auto-provisioning e gestione automatizzata remota

OTHER INFORMATION AND SUPPORT

SUPPORTO.TIESSE.COM



- Technical documentation, installation instructions, quick start guide, first access data
- Firmware updates
- Declaration of conformity EMC, RED, RoHS, ...
- Technical support request
- End of sale and end of product support information
- Warranty repair and product reconditioning

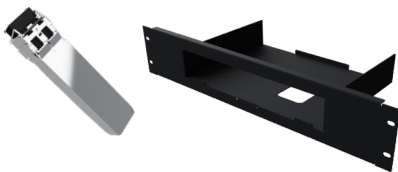
WIKI.TIESSE.COM



- Website dedicated to software documentation
- User manuals
- First access guides
- Case studies, tutorials and other useful resources for product use

ADD-ONS

Optional accessories such as SFP transceiver modules and rack-mount kits are available. Please consult the relevant datasheets, which can be downloaded from www.tiesse.com.



SYSTEM FEATURES

PROCESSOR	Network processor @400 Mhz
RESET	Reset AND restore factory settings

CHASSIS	Metallic material, black color
FORM FACTOR	Desktop Rack (optional kit)



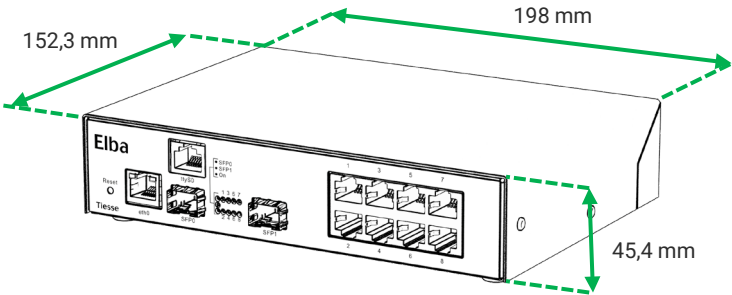
SUSTAINABILITY

SISTEMA

Power	- External Desktop 12 V (internal Vdc 2.5 A) - On/off button
Cooling	Fanless
Consumption (full functions)	≈ 20W
EEE (Energy-Efficient Ethernet)	Tiesse products comply with the EEE (802.3az) standard, which saves energy by automatically switching off Ethernet ports when not in use.
Dynamic Power Scaling	Tiesse products use control mechanisms to automatically reduce power consumption by lowering the CPU clock frequency when the load is low.
Mean Time Between Failure (MTBF)	≈ 2452800 hours

ENVIRONMENTAL DATA

Operating temperature	−5° C / +55° C
Storage temperature	−40° C / +70°
Max. relative operating humidity	93% (non condensing)



SIZE and WEIGHTS

Machine body	198 x 152,3 x 45,4 (L x P x A mm)		
	≈ 1332 gr (max weight including packaging and accessories)		
Total weight	Product	Accessories	Packaging
	≈ 815 gr	≈ 414 gr	≈ 103 gr

OTHER INFORMATION

Packaging and wrapping	For this product, on average 90% of the packaging material is paper/cardboard and the of plastic material is about 10% or less. 100% of the packaging material is recyclable
RAEE waste	For the correct disposal of Waste Electrical and Electronic Equipment (WEEE), pursuant to Article 26 of Legislative Decree No. 49 of 14 March 2014 'Implementation of Directive 2012/19/EU': contact raee@tiesse.com



Tiesse is a totally Italian company with more than 25 years of experience in the design, development and production of network equipment and IoT devices, suitable for use in mission-critical and industrial scenarios. Tiesse's most successful series, Imola, Lipari and Levanto, are innovative, competitive and certified, and are present in the networks of the major telecommunications operators, in the energy sector, large-scale distribution and vertical sectors, both in the Italian and foreign markets.

Further information on Tiesse solutions can be found on the company website www.tiesse.com.



Info: info@tiesse.com

Marketing & sales: marketing@tiesse.com

Tel. +39.0125.230544

www.tiesse.com



© Copyright Tiesse S.p.A.

Any disclosure, derivation or reproduction of this document, even partial, is strictly prohibited without prior written authorization by Tiesse S.p.A.

Disclaimer

The informations in this document may contain predictive statements including, without limitation, statements regarding the future financial and operating results, future product portfolio, new technology, etc. There are a number of factors that could cause actual results and developments to differ materially from those expressed or implied in the predictive statements. Therefore, such information is provided for reference purpose only and constitutes neither an offer nor an acceptance. Tiesse may change the informations at any time without notice.

Ver. ENG 120625

