



Imola x872-IKF-IKW-PoE



Imola x872-IKF-IKW-PoE



Ultrabroadband router PoE - Fiber - eVDSL - Wi-Fi - LTE

SERIE IMOLA X872

Imola x872 series is an innovative line of routers with ultra broadband VDSL Enhanced and fibre connectivity, with 14 Ethernet ports (of which 5 Gigabit and 9 Fast Ethernet), Wi-Fi connectivity and cellular radio in one device.

Thanks to the optional mounting kit, all products in the Imola x872 series become **rack-mountable**.

ALL-IN-ONE



FTTC, FTTH, FWA, 4G/5G, in a single device for reliable, versatile and scalable connectivity. Our Imola series devices are adaptable to any technology and include the features

- Routing & switching
- QoS

KEY FACTORS



Secure by design

Right from the design phase for robust and natively secure solutions.



Always-On

Stable connections anywhere, with multiple links, transparent backup, and quality of service for uninterrupted business.



Certified

Validated for inclusion in business offering profiles and use within the networks of major telecom operators.



Rugged and carrier grade

Designed to withstand and operate for long periods in industrial and disturbed environments. Carrier grade reliability.



Smart value

Maximizes business value with an excellent performance-to-price ratio.



Zero Touch Provisioning

Zero Touch Provisioning facilitates remote management and agile configuration of the installed base.



Eco-efficient

Minimal consumption, lower environmental impact and higher operating cost savings.



Factory pre-configurations

Receive your product pre-configured according to your specific case.



100% factory-tested

We test all our equipment, including SIM cards for models with a cellular radio connection.



IMOLA x872-IKF-IKW-PoE models

The Imola x872-IKF-IKxW models include the features described in this datasheet in a robust, all-in-one device and are distinguished by the presence of the 4G radio cellular connection:



8 Fast Ethernet ports



5 Gigabit Ethernet ports



1 PoE port



1 eVDSL port



1 fiber port



Wi-Fi b/g/n



1 4G cat. 4 port



2 SIM slot for backup link



Zero Touch Provisioning



Rack-mountable with optional kit



IMOLA 0872-IKF-IKW-PoE

Model without radio cellular connection



IMOLA 5872-IKF-IKW-PoE

Model with radio cellular connection



BACKUP: high availability mission critical

Seamless backup

The user does not perceive service interruptions and the transition to backup.

Transitions from normal to backup mode and vice versa are performed considering the operational costs.

Multiple Backup

A pair of routers in VRRP performs physical backup of both the network and hardware.

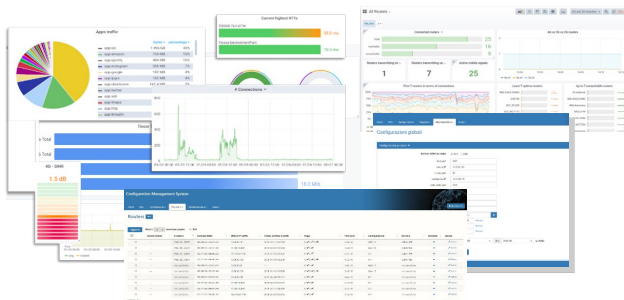
Homogeneous Backup

A single router integrates all ports, wired and mobile.

Heterogeneous backup

An installed base can be upgraded by adding a mobile router and using the VRRP (Virtual Router Redundancy Protocol).

ZERO TOUCH PROVISIONING



Tiesse's router are integrated in the **TNA (Tiesse Network Architecture)** suite.

TNA is the modular software suite that enables Zero Touch Provisioning network architecture, including monitoring, remote and automated web-based management of configurations and firmware releases of the installed fleet; it enables traffic engineering, network overlays, and many other functionalities.

A complete datasheet of the solution is available at www.tiesse.com.

SUGGESTED SCENARIOS AND APPLICATIONS



ISP & Telco Ready

Designed to meet the requirements of service providers, telecom operators, carriers, and system integrators.



Backup and redundancy on multiple links

Optimised products for ultra-connected branches and remote locations



Service continuity and Mission Critical applications

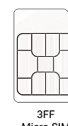
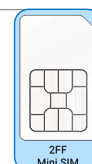
Business applications requiring always-on links and quality of service



HARDWARE INTERFACES

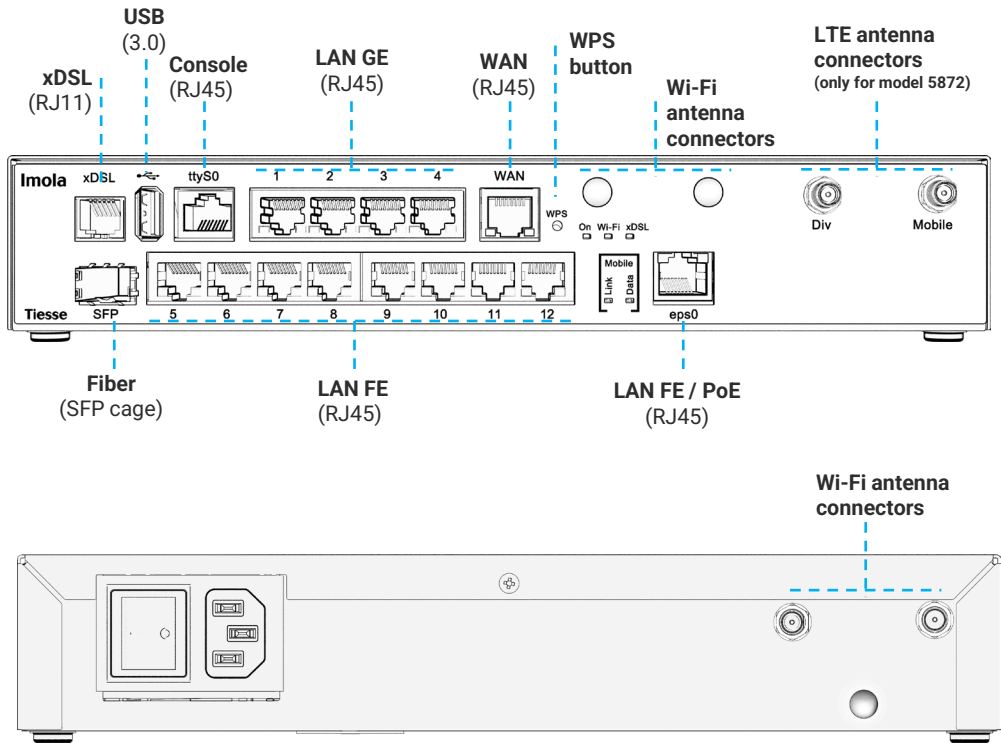
Port	N°	Type	Details
LAN	9	FE	10/100 Mbps
	5	GE	10/100/1000 Mbps
	1	Simultaneous Wi-Fi	- 802.11 b/g/n port (2.4 GHz) 2x2, up to 300 Mbps - 2 removable antennas, SMA male connector, located on the front of the product
	1		- 802.11 ac (5.4 GHz), up to 1300 Mbps - 2 removable antennas, SMA male connector, located on the rear of the product
POE	1		- Etichetta eps0 connettore RJ45 - Conforme allo standard IEEE.802.3at Tipo 1 (af) e Tipo 2 - Endpoint PSE alternativa A - Potenza massima erogata: fino a 30 W
WAN	1	GE	10/100/1000 Mbps WAN, RJ45 connector (WAN labels)
	1	Fiber	- SFP port for WAN access with fibre optic cable - GPON connection support - Support of different models of SFP transceiver modules (not included) - Maximum data rate 1000 Mbps (SX, BX, LX, ZX) - Supported connectors LC simplex, LC duplex
		xDSL	Full rate ADSL2/2+ / eVDSL
		ADSL2/2+	- Downstream data rate up to 24 Mbps and upstream data rate up to 3.5 Mbps - Compliant with Standard G.992.1 annex A, B, C & I, G.992.2-g.Lite, G.992.3 annex A, B, I, J, M, G.992.4-g.Lite.bis, G.992.5 annex A, B, C, I, J, M, ANSI T1.413 issue2, ETSI TS 388 - ADSL-over-ISDN, ITU T-I361, ITU T-I.363.5, ITU T-I.432, ITU T-I610, ITU T-I731
	1	VDSL2	- Support for all VDSL2 profiles: 8 MHz up to 30 MHz ITU-T G993.2 - Compliant with G.Vector standard (ITU-T G.993.5) - Compliant with ITU-T G.998.4 G.INP standard - Compatible with ADSL2 (backward compatibility)
		eVDSL	- Support for all VDSL2 profiles: 8 MHz up to 35 MHz, in compliance with ITU-T G993.2 Annex Q (35b or Vplus profiles), capable of aggregate rates of up to 400Mbps - G.Vector support (ITU-T G.993.5) - Compliant with ITU-T G.998.4 G.INP standard (impulse noise protection) - Compatible with ADSL2 (backward compatibility) - Excellent connection stability in case of line disturbances
RADIO CELLULAR (just on 5872 models)		GSM / GPRS / EDGE	- Frequency band: 900 / 1800 / 1900 MHz - GPRS multislot 10 - EDGE multislot 12
		UMTS / HSDPA / HSUPA / HSPA+	- WCDMA frequency bands: 900 / 2100 Mhz - HSDPA data transmission rate up to category 20 - HSUPA data rates up to category 6 - HSPA+ data rate: 21.1 Mbps in Downlink and 5.7 in Uplink - Dual Carrier HSPA mode support
	1	DC-HSPA+	42 Mbps in download
		LTE	- Model with LTE cat.4 modem - Frequency bands: 800 / 900 / 1800 / 2100 / 2600 Mhz - Data rate: Category 4, MIMO* - LTE data rate: 150 Mbps in Downlink and 50 Mbps in Uplink - Two APNs can be configured and activated simultaneously
			- Model with LTE cat.6 modem - Optional version on request
	2	ANTENNAS	- 2 removable antennas, male SMA connector, on the front of the product - Multiple Input/Multiple Output (MIMO) support - Outdoor version antennas (omni-directional and directional), high-gain and vandal-proof (optional) also available
	2	SIM	- 2 mutually exclusive mini SIM card slots - One internal and one external access slot

*NOTE: the throughput value depends on the network configuration, assigned bandwidth, number of users and RF signal conditions.

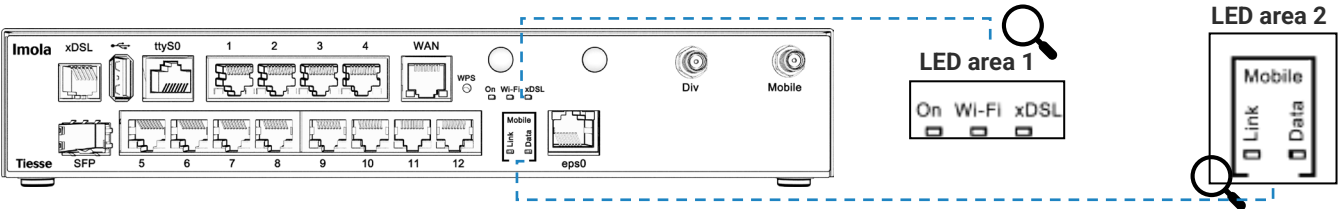




HARDWARE INTERFACES



LED DESCRIPTION



LED	Color	Position	Details
Power	Green	Led area 1	Operational status of the product power supply
Wi-Fi	Green	Led area 1	Wi-Fi b/g/n (2.4 GHz) operative status
xDSL	Green	Led area 1	xDSL connection operational status
LAN	Yellow	On LAN ports	One for each ETH port, operational status of the 1Gbps connection
	Green	On LAN ports	One for each ETH port, operational status of the connection up to 100Mbps
Radio Cellular (only on 5872)	Green	Led area 2	Link: radio cellular connection operational status
	Green	Led area 2	Data: radio cellulare connection data activity



SOFTWARE

Note: the following list is purely indicative, active features depend on version and software update (NOS).

NETWORKING

- TCP-UDP IPv4
- IPv6

LAYER 2

- LAN Bridging
- VLAN on 802.1q LAN interfaces in Access mode, Trunk, native VLAN and Hybrid mode
- Layer 2 Protocol Tunneling (L2PT)
- 802.1Q-in-802-1Q

ROUTING & MULTICAST

- Static, Policy routing, RIPv1, RIPv2
- BGP-4, BGP-4+
- OSPFv2
- VRF Lite, Routing redistribution and tagging
- IEEE 802.1d (Spanning Tree Protocol)
- VRRP (Virtual Routing Redundancy Protocol) with IPv4-IPv6 authentication
- IGMP v1-v2-v3, IGMP snooping, IGMP proxying
- Multicast routing with PIMv2 sparse-mode and PIMv2 dense-mode, MSDP

QoS

- Traffic classification based on source IP, destination IP, protocols (UDP, ICMP, TCP, etc.) and ports, and their combinations, on application recognition, on IP Precedence and DSCP
- DiffServ
- Remarking of IP Precedence, DSCP and CoS
- QoS on ATM classes
- Shaping with guaranteed bandwidth allocation and redistribution of excess bandwidth
- Committed Access Rate and Multicast rate limit
- Traffic prioritisation mechanisms, definition of an arbitrary number of priority classes
- IEEE 802.3ad link aggregation

SECURITY

- NAT/PAT
- ACLs, Stateful Firewall
- SSL Tunnelling
- L2TP
- GRE Tunnelling with keep alive and key sequence numbering (cellular network optimisation)
- VPN with IPSEC/ESP or IPSEC/AH IKEv1/IKEv2

SERVICES

- DHCP client, DHCP server with anti-spoofing functions, DHCP Layer Discovery Protocol IEEE 802.1ab, DHCP relay
- Intelligent DNS Proxy, local and remote
- Traceroute
- NTP Client and Server Support
- Easy VPN
- DDns

MANAGEMENT & CONFIGURATION

- SNMP v1, SNMPv2, SNMPv3
- Server Telnet con sessioni multiple simultanee
- Server SSH con sessioni multiple simultanee (SSHv2)
- Netflow
- Supporto IP SLA per: Ritardo a senso unico, ritardo di andata e ritorno, jitter, perdita di pacchetti
- Gestione dei guasti Syslog /Trap
- Supporto Radius, TACACS+
- Tracking for backup management, commands and scheduled events
- Software update via TFTP, FTP, sFTP, HTTP, HTTPS, SCP
- Configuration via Command Line Interface (CLI), Text/Menu oriented and Telnet
- TNA (Tiesse Network Architecture) suite for self-provisioning and automated remote management
- Management of an unlimited number of configurations



SYSTEM FEATURES

PROCESSOR	RISC Network processor	Wi-Fi ANTENNAS	2 external removable external antennas, on the back SMA male connector
MEMORY	DRAM 256 MB	4G ANTENNAS	2 external removable external antennas, on the front SMA male connector
FLASH MEMORY	256 MB		
CHASSIS	Metal material, black color		
FORM FACTOR	Desktop		
	Rack (optional kit)		

ADD-ONS

Optional accessories such as antennas for both indoor and outdoor omnidirectional and directional installations, SFP transceiver modules and rack-mount kits are available.

Please check the add-ons datasheets, which can be downloaded from www.tiesse.com.



Images for illustrative purposes

OTHER INFORMATION AND SUPPORT

SUPPORTO.TIESSE.COM



- Technical documentation, installation instructions, quick start guide, first access data
- Firmware updates
- Declaration of conformity EMC, RED, RoHS, ...
- Technical support request
- End of sale and end of product support information
- Warranty repair and product reconditioning

WIKI.TIESSE.COM



- Website dedicated to software documentation
- User manuals
- First access guides
- Case studies, tutorials and other useful resources for product use

PRODUCT IMAGES



Imola 0872-IKF-IKW-PoE



Imola 5872-IKF-IKW-PoE



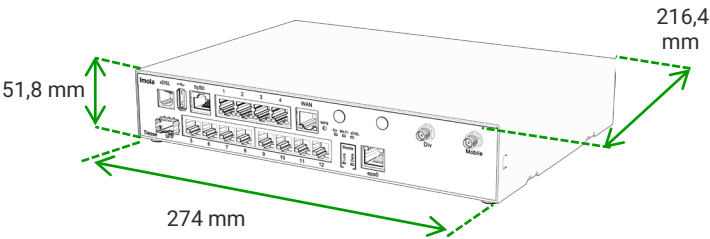
SUSTAINABILITY

SYSTEM

Power	<ul style="list-style-type: none">- Internal 100-240 VAC (IEC socket)- On/Off button
Cooling	Fanless
Consumption (full functions)	<ul style="list-style-type: none">- Imola 0872-IKF-IKW-PoE: $\approx 11,5\text{W} + \approx 30\text{W PoE}$- Imola 5872-IKF-IKW-PoE: $\approx 12\text{W} + \approx 30\text{W PoE}$
EEE (Energy-Efficient Ethernet)	Tiesse products comply with the EEE (802.3az) standard, which saves energy by automatically switching off Ethernet ports when not in use.
Dynamic Power Scaling	Tiesse products use control mechanisms to automatically reduce power consumption by lowering the CPU clock frequency when the load is low.
Mean Time Between Failure (MTBF)	<ul style="list-style-type: none">- Imola 0872-IKF-IKW-PoE: 321667 hours- Imola 5872-IKF-IKW-PoE: 311856 hours

ENVIRONMENT DATA

Operating temperature	$-25^{\circ}\text{C} / +70^{\circ}\text{C}$ (96 hours)
Storage temperature	$-40^{\circ}\text{C} / +70^{\circ}\text{C}$
Maximum relative operating humidity	93% (non condensing)



SIZE and WEIGHT - Imola 0872-IKF-IKW-PoE

Machine body	274 x 210,4 x 51,8 (W x D x H mm)
Total weight	$\approx 2310\text{ gr}$ (maximum weight including packaging and accessories)
Product	$\approx 1840\text{ gr}$
Accessories	$\approx 295\text{ gr}$
Packaging	$\approx 175\text{ gr}$

SIZE and WEIGHT - Imola 5872-IKF-IKW-PoE

Machine body	274 x 216,4 x 51,8 (W x D x H mm)
Total weight	$\approx 2460\text{ gr}$ (maximum weight including packaging and accessories)
Product	$\approx 1870\text{ gr}$
Accessories	$\approx 415\text{ gr}$
Packaging	$\approx 175\text{ gr}$

OTHER INFORMATION

Packaging and wrapping	The packaging material of this product is $\approx 88\%$ paper/cardboard, and the incidence of plastic packaging is 12% or less. 100% of the packaging material is recyclable
RAEE waste	For the correct disposal of Waste Electrical and Electronic Equipment (WEEE), pursuant to Article 26 of Legislative Decree No. 49 of 14 March 2014 'Implementation of Directive 2012/19/EU': contact raee@tiesse.com



Tiesse is a totally Italian company with more than 25 years of experience in the design, development and production of network equipment and IoT devices, suitable for use in mission-critical and industrial scenarios. Tiesse's most successful series, Imola, Lipari and Levanto, are innovative, competitive and certified, and are present in the networks of the major telecommunications operators, in the energy sector, large-scale distribution and vertical sectors, both in the Italian and foreign markets.

Further information on Tiesse solutions can be found on the company website www.tiesse.com.



Info: info@tiesse.com

Marketing & sales: marketing@tiesse.com

Tel. +39.0125.230544

www.tiesse.com



© Copyright Tiesse S.p.A.

Any disclosure, derivation or reproduction of this document, even partial, is strictly prohibited without prior written authorization by Tiesse S.p.A.

Disclaimer

The informations in this document may contain predictive statements including, without limitation, statements regarding the future financial and operating results, future product portfolio, new technology, etc. There are a number of factors that could cause actual results and developments to differ materially from those expressed or implied in the predictive statements. Therefore, such information is provided for reference purpose only and constitutes neither an offer nor an acceptance. Tiesse may change the informations at any time without notice.

Ver. ENG 120625

